

E

D

C

B

A

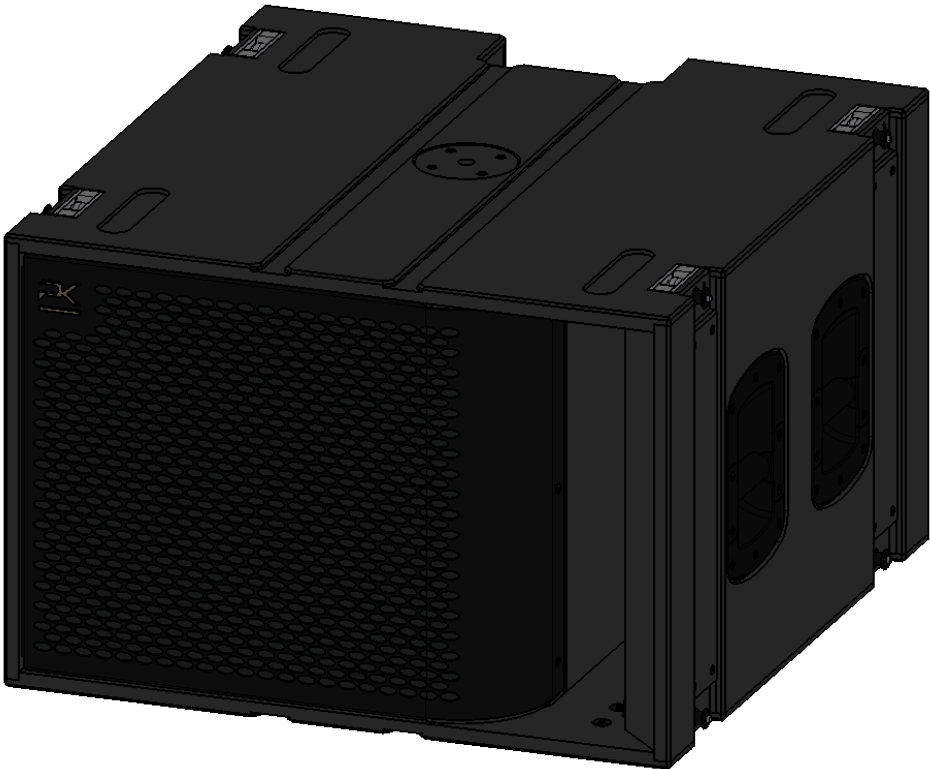
E

D

C

B

A

6	5	4	3	2	1
PART NUMBER	DESCRIPTION	QTY.	T18 (EtherCON) BOM		
401-0031	T18-Cabinet-C	1			
840-0075	T18-RIGGING-KIT	4			
840-0076	T18-BUMPER-KIT	4			
778-0006	TCH-500-238900-KIT	4			
765-0006	DRV-18 Sound-18NLW4500-8	1			
810-0009	PK 18" Gasket	1			
601-0021	VE40 (EtherCON)	1			
773-0032	T218-Grill-001	1			
650-0003	BADGE-LED LOGO-ASM 2.0	1			
773-0033	T18-Grill-02	1			
768-0002	Large Oval Rubber Foot	4			
708-0016	Crest Sound-M20 Pole Mount	1			
717-0009	3.2x6-POP RIVET-BLACK	4			
786-0076	T18-PRODUCT-PLATE	1			
717-0018	M5-KNIFE THREADED INSERT	13			
713-0011	M5-SMALL OD FLAT WASHER-DUPLEX BLACK ZINC COATED	21			
713-0018	M8-SMALL OD FLAT WASHER-DUPLEX BLACK ZINC COATED	8			
711-0091	M5x25-BUTTON HEAD SOCKET CAP SCREW-DUPLEX BLACK ZINC COATED	11			
713-0013	M5-SPLIT LOCK WASHER-DUPLEX BLACK ZINC COATED	23			
713-0019	M8-SPLIT LOCK WASHER-DUPLEX BLACK ZINC COATED	8			
711-0093	M5x25-SOCKET HEAD CAP SCREW-DUPLEX BLACK ZINC COATED	15			
711-0124	M8x50-SOCKET HEAD CAP SCREW-DUPLEX BLACK ZINC COATED	8			
711-0099	M5x35-SOCKET HEAD CAP SCREW-DUPLEX BLACK ZINC COATED	4			
711-0087	M5x16-SOCKET HEAD CAP SCREW-DUPLEX BLACK ZINC COATED	3			
711-0088	M5x20-FLAT HEAD SOCKET CAP SCREW-DUPLEX BLACK ZINC COATED	7			
			<div><div><div>UNLESS OTHERWISE INDICATED, FAILURE TO MEET THESE CRITERIA WILL RESULT IN PART REJECTION</div><div><div>1. ALL DIMENSIONS IN mm</div><div>2. REMOVE ALL BURRS AND SHARP CORNERS</div><div>3. CORNER RADII 1.5mm</div><div>4. DO NOT SCALE DRAWING</div><div>5. MACHINED SURFACE FINISH 6.3 µm Ra</div><div>6. HOT WORK PROCESSES ARE NOT PERMITTED</div></div><div><div>7. TOLERANCES:</div><div>XXXX - ± 1mm</div><div>XXX.X - ± 0.3mm</div><div>XX.XX - ± 0.10mm</div><div>ANGLES - ± 0.5°</div></div></div></div> <div><div><div><div><div>PK SOUND</div><div>235075 Ryan Rd.</div><div>Rocky View County, AB</div><div>T1X 0K3</div><div>P.403-452-6004 F.403-452-6024</div></div><div><div>DRAWN BY: LM</div><div>REV.: Rev.001</div><div>DATE: 11/28/2022</div><div>SCALE 1:8</div></div></div><div><div>PART/ASSEMBLY#: 905-0009</div><div>NAME/DESC.: T18 (EtherCON)</div><div>PROJECT: T18</div></div></div><div>SHEET 1 OF 5</div></div>		

6

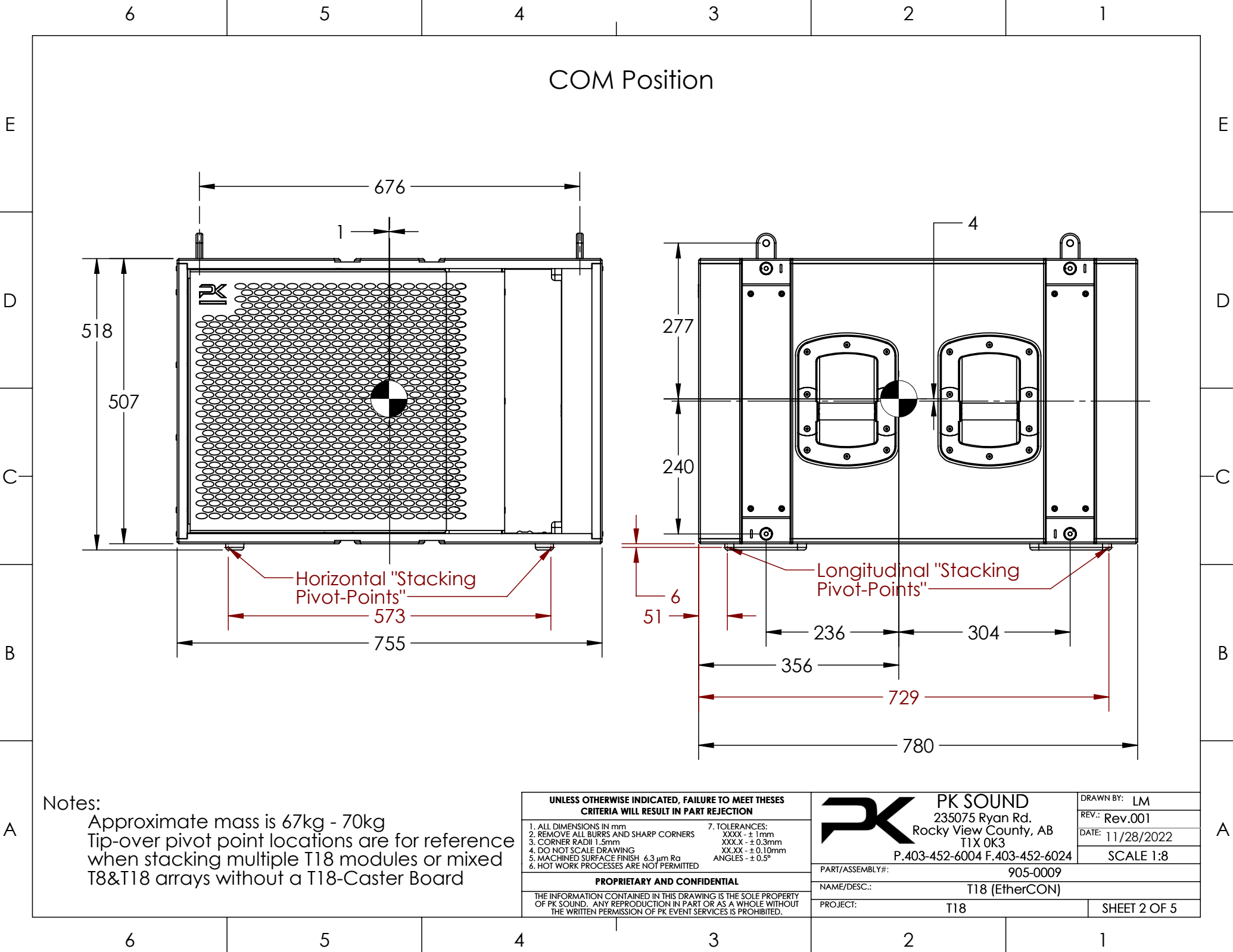
5

4

3

2


1



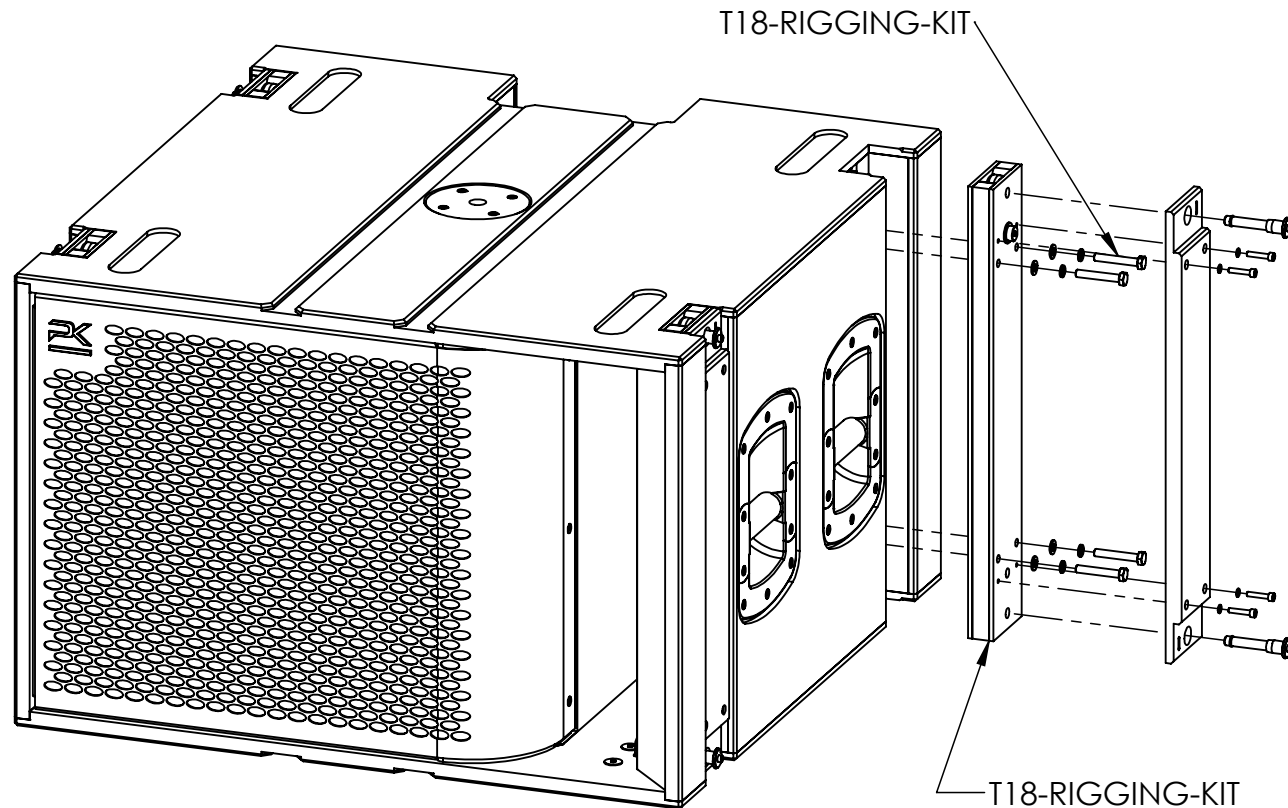
COM Position

Notes:
Approximate mass is 67kg - 70kg
Tip-over pivot point locations are for reference
when stacking multiple T18 modules or mixed
T8&T18 arrays without a T18-Caster Board

UNLESS OTHERWISE INDICATED, FAILURE TO MEET THESE CRITERIA WILL RESULT IN PART REJECTION	
1. ALL DIMENSIONS IN mm	7. TOLERANCES:
2. REMOVE ALL BURRS AND SHARP CORNERS	XXXX - ± 1mm
3. CORNER RADII 1.5mm	XXX.X - ± 0.3mm
4. DO NOT SCALE DRAWING	XX.XX - ± 0.10mm
5. MACHINED SURFACE FINISH 6.3 µm Ra	ANGLES - ± 0.5°
6. HOT WORK PROCESSES ARE NOT PERMITTED	
PROPRIETARY AND CONFIDENTIAL	
THE INFORMATION CONTAINED IN THIS DRAWING IS THE SOLE PROPERTY OF PK SOUND. ANY REPRODUCTION IN PART OR AS A WHOLE WITHOUT THE WRITTEN PERMISSION OF PK EVENT SERVICES IS PROHIBITED.	

	PK SOUND	DRAWN BY: LM
	235075 Ryan Rd.	REV.: Rev.001
	Rocky View County, AB	DATE: 11/28/2022
	T1X 0K3	SCALE 1:8
P.403-452-6004 F.403-452-6024		
PART/ASSEMBLY#: 905-0009		
NAME/DESC.: T18 (EtherCON)		
PROJECT: T18	SHEET 2 OF 5	

T18 Rigging Attachment



UNLESS OTHERWISE INDICATED, FAILURE TO MEET THESE
CRITERIA WILL RESULT IN PART REJECTION

- | | |
|---|--------------------------|
| 1. ALL DIMENSIONS IN mm | 7. TOLERANCES: |
| 2. REMOVE ALL BURRS AND SHARP CORNERS | XXXX - ± 1 mm |
| 3. CORNER RADII 1.5mm | XXX.X - ± 0.3 mm |
| 4. DO NOT SCALE DRAWING | XX.XX - ± 0.10 mm |
| 5. MACHINED SURFACE FINISH $6.3 \mu\text{m Ra}$ | ANGLES - $\pm 0.5^\circ$ |
| 6. HOT WORK PROCESSES ARE NOT PERMITTED | |

PROPRIETARY AND CONFIDENTIAL

THE INFORMATION CONTAINED IN THIS DRAWING IS THE SOLE PROPERTY
OF PK SOUND. ANY REPRODUCTION IN PART OR AS A WHOLE WITHOUT
THE WRITTEN PERMISSION OF PK EVENT SERVICES IS PROHIBITED.



PK SOUND
235075 Ryan Rd.
Rocky View County, AB
T1X 0K3
P.403-452-6004 F.403-452-6024

DRAWN BY: LM
REV.: Rev.001
DATE: 11/28/2022
SCALE 1:8

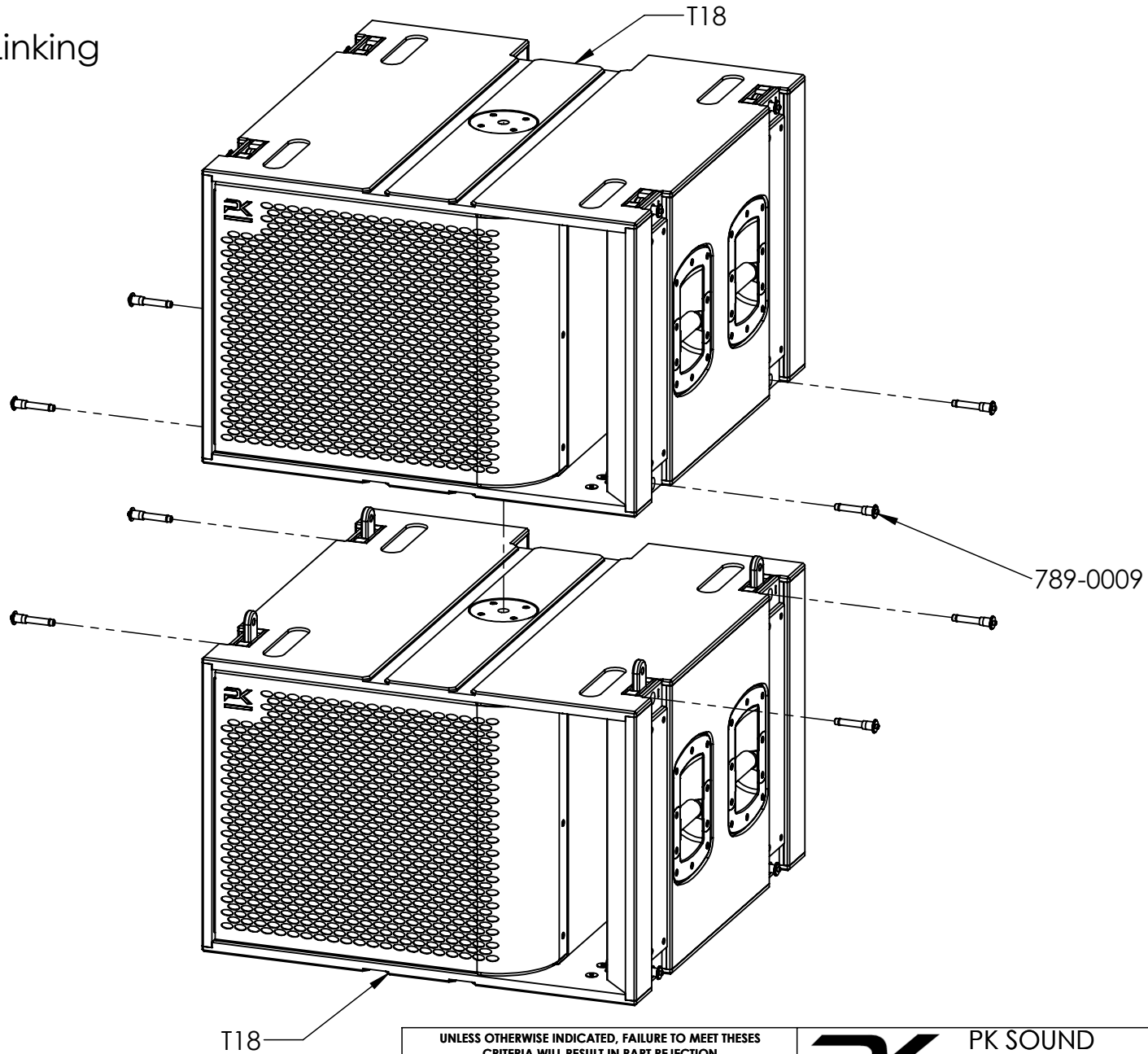
PART/ASSEMBLY#: 905-0009

NAME/DESC.: T18 (EtherCON)

PROJECT: T18

SHEET 3 OF 5

T18 Module Linking



UNLESS OTHERWISE INDICATED, FAILURE TO MEET THESE
CRITERIA WILL RESULT IN PART REJECTION

- | | |
|---|--------------------------|
| 1. ALL DIMENSIONS IN mm | 7. TOLERANCES: |
| 2. REMOVE ALL BURRS AND SHARP CORNERS | XXXX - ± 1 mm |
| 3. CORNER RADII 1.5mm | XXX.X - ± 0.3 mm |
| 4. DO NOT SCALE DRAWING | XX.XX - ± 0.10 mm |
| 5. MACHINED SURFACE FINISH $6.3 \mu\text{m Ra}$ | ANGLES - $\pm 0.5^\circ$ |
| 6. HOT WORK PROCESSES ARE NOT PERMITTED | |

PROPRIETARY AND CONFIDENTIAL

THE INFORMATION CONTAINED IN THIS DRAWING IS THE SOLE PROPERTY
OF PK SOUND. ANY REPRODUCTION IN PART OR AS A WHOLE WITHOUT
THE WRITTEN PERMISSION OF PK EVENT SERVICES IS PROHIBITED.



PK SOUND
235075 Ryan Rd.
Rocky View County, AB
T1X 0K3
P.403-452-6004 F.403-452-6024

DRAWN BY: LM
REV.: Rev.001
DATE: 11/28/2022
SCALE 1:10

PART/ASSEMBLY#:	905-0009	
NAME/DESC.:	T18 (EtherCON)	
PROJECT:	T18	SHEET 4 OF 5

6

5

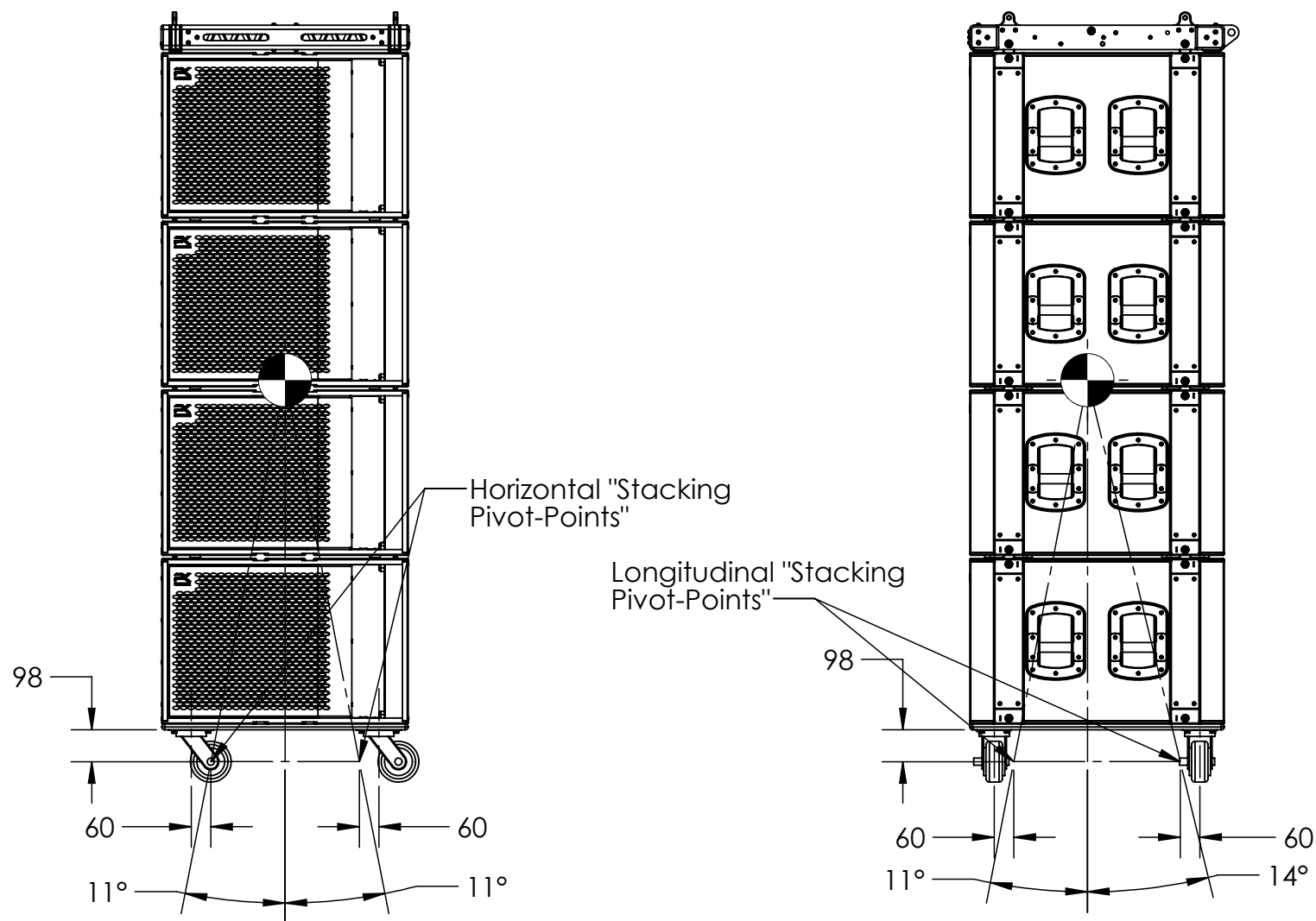
4

3

2

1

Transporting & Stacking on T18-Caster Board



Notes:

Maximum of 4 cabinets can be stacked together on a T18-Caster Board with or without a T8-Suspension Frame on top.

UNLESS OTHERWISE INDICATED, FAILURE TO MEET THESE CRITERIA WILL RESULT IN PART REJECTION

- | | |
|---|------------------|
| 1. ALL DIMENSIONS IN mm | 7. TOLERANCES: |
| 2. REMOVE ALL BURRS AND SHARP CORNERS | XXXX - ± 1mm |
| 3. CORNER RADII 1.5mm | XXX.X - ± 0.3mm |
| 4. DO NOT SCALE DRAWING | XX.XX - ± 0.10mm |
| 5. MACHINED SURFACE FINISH 6.3 µm Ra | ANGLES - ± 0.5° |
| 6. HOT WORK PROCESSES ARE NOT PERMITTED | |

PROPRIETARY AND CONFIDENTIAL

THE INFORMATION CONTAINED IN THIS DRAWING IS THE SOLE PROPERTY OF PK SOUND. ANY REPRODUCTION IN PART OR AS A WHOLE WITHOUT THE WRITTEN PERMISSION OF PK EVENT SERVICES IS PROHIBITED.



PK SOUND

235075 Ryan Rd.
Rocky View County, AB
T1X 0K3

P.403-452-6004 F.403-452-6024

DRAWN BY: LM

REV.: Rev.001

DATE: 11/28/2022

SCALE 1:20

PART/ASSEMBLY#: 905-0009

NAME/DESC.: T18 (EtherCON)

PROJECT: T18

SHEET 5 OF 5

6

5

4

3

2

1