



D E P T . 1 0

**Blackstar**<sup>®</sup>  
AMPLIFICATION



## Dept. 10 – the world’s most advanced valve pedals.

Dept. 10 is the Blackstar R&D team responsible for blue sky innovation and design. This team of engineers are all musicians and are constantly researching new ideas to help create your perfect tone. They have developed the world’s most advanced valve pedals. Dept. 10 pedals all use an ECC83 triode valve at their heart, running at more than 200V internally which allows them to deliver organic tone, dynamics and break up. Innovative design, premium components and our advanced Cab Rig D.I. technology, create the ultimate valve pedals.

### The 60 Second Story

- Three models: Dual Drive, Dual Distortion, and Boost.
- Running at more than 200V, the ECC83 triode at the heart of these pedals delivers organic dynamics, tone and break up.
- BOOST: The ultimate high voltage valve boost pedal. Combining a Class A gain stage and natural sounding passive James-Baxandall EQ this class-leading pedal is like adding two extra hot valve stages to your amp.
- DUALS: The best valve drive or distortion pedal you will ever own and a world-class valve recording preamp – with 3 crunch/overdrive voices alongside the clean channel, option our patented ISF control, low latency USB, XLR out and Dept. 10’s proprietary Cab Rig simulator technology.
- Dual Drive and Dual Distortion include Cab Rig, our next-generation DSP speaker simulator that reproduces the sound and feel of a mic’d up guitar cab in incredible detail. Deep-dive using the accompanying free software and capture the incredible tones via USB / XLR out or headphones.
- Pro connectivity and integration into your setup using low latency USB audio as a valve interface for recording, and XLR D.I. for live use.
- Effects loop for easy integration into your pedalboard.
- Compact pedal running at 9V.

### Top 3 Call-outs

- ECC83 valve driven pedals running at more than 200V like a valve amplifier.
- Cab Rig simulator technology built-in with low latency USB, XLR D.I. and effects loop.
- Compact size running at 9V.

### Why?

Many players choose to create their sound using a pedal setup these days, so we wanted to bring the organic dynamics, tone and break up of a valve preamp into a compact pedal that integrates simply into any setup. By combining traditional high voltage valve design with our latest technology we have created the world’s most advanced valve pedals.

### Inside Information:

- Valve runs at 200V, the same high tension voltage found in a valve amp, that’s why these pedals react more like a preamp than a pedal.
- The Boost’s built-in buffer / line driver is perfect for preserving your tone when using long cables, or large pedalboards, even driving low impedance pedals like many wah-wahs.
- All Dept. 10 pedals come with a PSU.
- Cab Rig overcomes the shortcomings of IR ‘snapshots’ and uses state-of-the-art digital processing to reproduce the sound and feel of a mic’d up guitar cab in incredible detail
- Complete versatility for multiple use cases:
  - Valve overdrive or boost pedal into your amp
  - Valve preamp
  - Valve recording interface via low latency USB
  - Valve preamp stage to warm up a digital amp
  - Back-up amp via D.I. out using Cab Rig into a PA



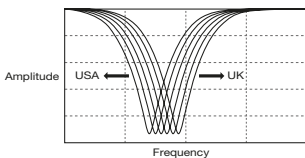


D E P T . 1 0

**Blackstar**<sup>®</sup>  
AMPLIFICATION

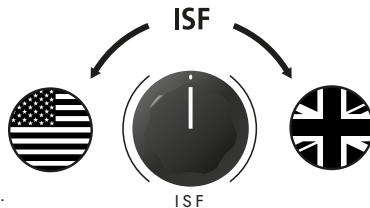
	Dual Drive	Dual Distortion	Boost
Valve	ECC83 (12AX7)	ECC83 (12AX7)	ECC83 (12AX7)
Channels	2	2	1
Voices	4: Clean, Crunch 1, Crunch 2, Overdrive	4: Clean, Crunch, Overdrive 1, Overdrive 2	Boost
EQ	Bass, Middle, Treble	Bass, Middle, Treble	James Baxandall EQ: Low, High
Patented ISF	Y	Y	N
Cab Rig DSP	Y	Y	N
USB Audio interface	Y	Y	N
XLR Cab Rig Output	Y	Y	N
Effects Loop	Y	Y	N
Use as preamp	Y	Y	N
Buffer / Line Driver	N	N	Y
Footswitches	2	2	1
Power	9v 500mA	9v 500mA	9v 500mA

**PATENTED ISF** (Infinite Shape Feature)



ISF works in conjunction with the Bass, Middle and Treble controls to give you access to infinite new sound possibilities.

- tone TIP:**
1. Start with ISF set to half way.
  2. Adjust Bass, Middle and Treble to taste.
  3. Gradually adjust ISF until you find your sound.



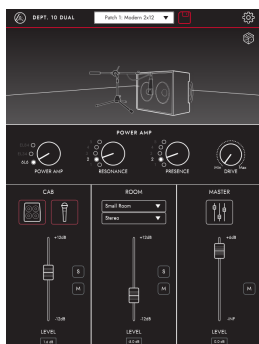
**Benefits of the ISF control:**

1. ISF is a passive circuit giving a musical response that is not found in active parametric or 'contour' controls.
2. The whole tone stack response (i.e. Bass, Middle and Treble) is moved.
3. The tone controls remain fully interactive, just like in a regular tone stack.
4. The ISF control is continuously variable between all the traditional responses allowing you to effectively design your own sound.
5. ISF and 'the sound in your head' are only available on Blackstar products.



**ARCHITECT**

Download our free Architect software for full control of Cab Rig simulator.



# CAB RIG SIMULATOR

Cab Rig is our next-generation DSP speaker simulator that reproduces the sound and feel of a mic'd up guitar cab in incredible detail. Deep-dive using the accompanying software and capture the incredible tones via USB / XLR D.I. out or headphones. Over 250 mic and cab combinations can be saved into one of the three onboard slots. Each cab has a choice of mic type and axis, alongside room mics and master EQ.

